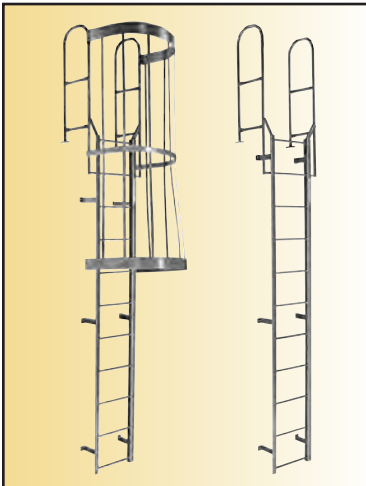


Cotterman[®] rolling metal ladders

QUALITY LADDERS SINCE 1925



FOUR MANUFACTURING LOCATIONS TO SERVE YOU

BAKERSFIELD, CA. • CROSWELL, MI.
ATLANTA, GA. • ARLINGTON, TX.



RETURN POLICY

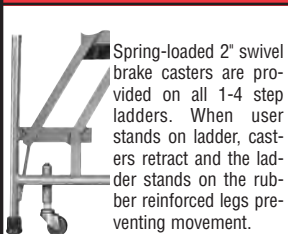
1. A return authorization must be requested within 30 days after original ship date. A Cotterman return authorization number must appear on the return shipment.
2. Returns can be authorized only for common models that can be quickly resold. A minimum 20% restocking charge (from net price) will be charge for handling, inspection and repainting. Custom designs cannot be returned. With sizing errors, replacement ladders or platforms must be reordered at the same time.
3. Return freight must be prepaid.
4. All returns must be returned to point of origin and are subject to inspection. Additional charges may apply for replacement parts and repairs.

NOTE: This return policy is intended to accommodate common ordering errors. i.e., sizing or duplications, and does not apply to warranty or workmanship claims or factory errors.

WARRANTY

All Cotterman products are guaranteed against defects in workmanship and materials for a period of one (1) year after shipment. At our discretion, Cotterman Company will repair or replace the product in question at no charge — subject to inspection. Freight damage, misapplication and misuse of the product are not covered by this warranty.

STANDARD FEATURES AND OPTIONS



OPTION B4

SAFE LOCK OPERATION

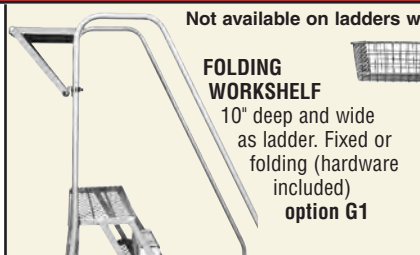
- A.** Stepping on bottom stem lowers trip bar, drops rubber tipped legs to floor to immobilize ladder.
B. Stepping on either pedal resets spring-return trip bar, places 4" dia. safe-lock casters in rolling position.
OPTION B4: Standard on 5 to 16 step, optional on 6500 series.



Not available on ladders with spring loaded casters

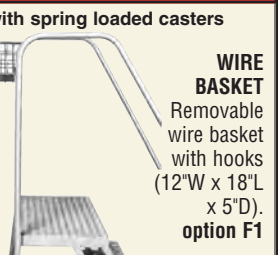
FOLDING WORKSHELF

10" deep and wide as ladder. Fixed or folding (hardware included)
option G1



WIRE BASKET

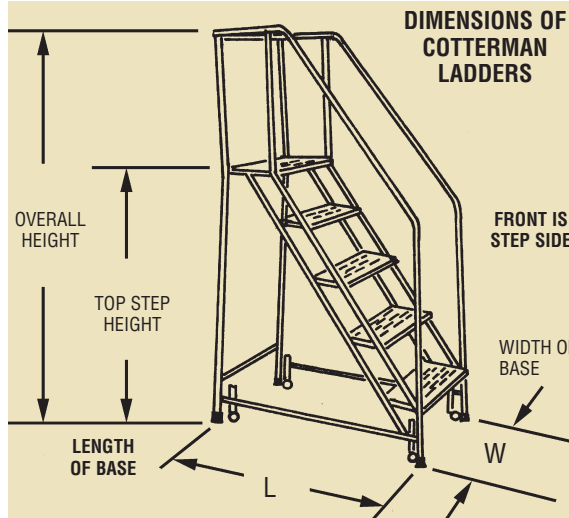
Removable wire basket with hooks (12"W x 18"L x 5"D).
option F1



HOW TO SELECT THE PROPER LADDER

1. Select top step height based on operations to be performed or weight and bulk of objects to be carried. Maximum convenient working height is generally 5'0" to 6'0" above top step.
2. Particularly in the larger sizes, choose a wide ladder over a narrow one if space permits. For very bulky loads, consider a 32" wide ladder. Take into account whether people must pass ladder in aisle and where it must rest when not in use.
3. Consider limitations on ladder dimensions imposed by doorways, overhead obstructions, corners that ladders must turn, etc.
4. Baskets and shelves are available for resting or sorting merchandise while on the ladder.
5. Where aisles are narrow, consider narrow aisle ladders for easier maneuverability.
6. For unusual conditions not illustrated in this catalog, ask for suggestions and prices.

DIMENSIONS OF COTTERMAN LADDERS



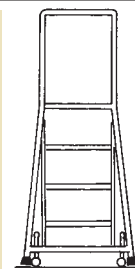
REPLACEMENT PARTS

2" caster box (complete for 1 ladder, ladder model required)

Rubber tips for 1" tubing.
Rubber pads, 2 1/2".

STABLE DESIGN

Slant leg design provides wider base for greater stability.



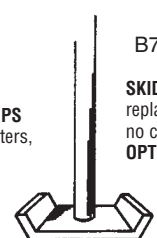
B1

RUBBER TIPS
replace casters, no charge,
OPTION B1



B7

SKID PLATES
replace casters, no charge,
OPTION B7



Cotterman®

COTTERMAN SERIES 1000 LADDERS are rigid, one piece, set-up, steel mobile ladder stands designed to meet or exceed OSHA standards. Safety is foremost with easy climbing angles, sturdy handrails, and large steps and top step of slip-resistant expanded metal. Caster assemblies are designed to secure the ladder to the floor when in use, and to permit easy rolling from job to job.

FEATURES:

- All tube members are large 1" O.D. smooth steel tubing.
- Climbing angles are 59°. Steps are 7" deep of durable, self-cleaning expanded metal. Top steps are 10", 20" or 30" deep.
- Spring loaded 2" casters are used on 1 to 4 step ladders permitting the ladder to roll freely when moved. The Cotterman Safe-Lock is used on 5 to 11 step ladders.
- Gray powder coat is the standard finish. Beige, dark brown, yellow, black, green, blue, red, white, orange and light gray are available.
- All Series 1000 ladders meet or exceed OSHA 1910.29, ANSI A14.7 standards with a 450 lb. load rating. Cal-OSHA models also available.



POWDER COATED TOUGH™

3 STEP LADDER
MODEL NO. 1003N1820

7 STEP WITH HANDRAILS
AND SAFE-LOCK
MODEL NO. 1007R2630

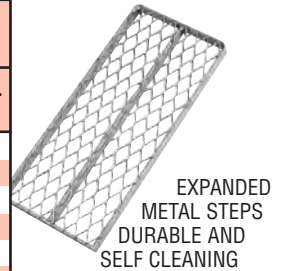
SET-UP

SERIES 1000

SET-UP STEEL SAFETY LADDERS

Larger Casters & Safe-Lock on 5 step & above • Swivel Brake Casters standard on 1-4 step.

DESCRIPTION: NO. OF STEPS INCL. TOP STEP	TOP STEP HEIGHT	OVERALL HEIGHT	18" WIDE AT TOP			26" WIDE AT TOP			32" WIDE AT TOP		
			MODEL NO.	BASE W"xL"	SHPG. WT.	MODEL NO.	BASE W"xL"	SHPG. WT.	MODEL NO.	BASE W"xL"	SHPG. WT.
1 STEP NO HANDRAILS	12"	12"	*1001N1818	18x16	14	*1001N2626	26x16	18	-	-	-
1 STEP WITH HANDRAILS	12"	16"	*1001G1818	18x16	14	*1001G2626	26x16	18	-	-	-
2 STEP NO HANDRAILS	20"	20"	*1002N1818	18x19	22	*1002N2626	26x19	32	-	-	-
2 STEP WITH HANDRAILS	20"	50"	*1002R1818	18x19	29	1002R2626	26x19	35	-	-	-
3 STEP NO HANDRAILS	30"	30"	*1003N1820	20x26	35	1003N2630	30x26	41	-	-	-
3 STEP WITH HANDRAILS	30"	60"	1003R1820	20x26	41	1003R2630	30x26	47	-	-	-
4 STEP NO HANDRAILS	40"	40"	1004N1820	20x31	45	1004N2630	30x31	51	**1004N3232	32x31	64
4 STEP WITH HANDRAILS	40"	70"	1004R1820	20x31	53	1004R2630	30x31	59	**1004R3232	32x31	72
5 STEP WITH HANDRAILS	50"	80"	1005R1820	20x40	82	1005R2630	30x40	94	**1005R3232	32x40	113
6 STEP WITH HANDRAILS	60"	90"	1006R1824	24x46	98	1006R2630	30x46	109	1006R3232	32x46	132
7 STEP WITH HANDRAILS	70"	100"	1007R1824	24x53	107	1007R2630	30x53	119	1007R3232	32x53	140
8 STEP WITH HANDRAILS	80"	110"	1008R1824	24x58	120	1008R2632	32x58	152	1008R3232	32x58	178
9 STEP WITH HANDRAILS	90"	120"	1009R1824	24x65	145	1009R2632	32x65	162	1009R3232	32x65	187
10 STEP WITH HANDRAILS	100"	130"	-	-	-	1010R2632	32x72	175	1010R3232	32x72	197
11 STEP WITH HANDRAILS	110"	140"	-	-	-	1011R2632	32x78	181	1011R3232	32x78	227



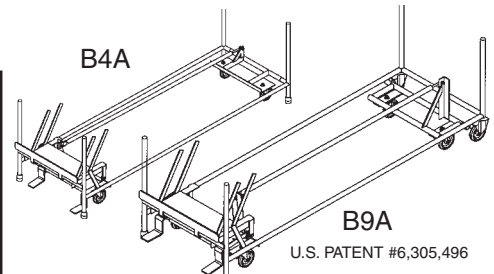
EXPANDED
METAL STEPS
DURABLE AND
SELF CLEANING

*Ships via UPS

NOTE: 10 and 11 step ladders are not available with optional 20" or 30" deep top step, please order 1500 series ladder.

**4 and 5 step 32" wide (with deep top step only) ladders require B4 safe-lock option.

**INCREASES LADDER
MANEUVERABILITY
TURNS CORNERS EASIER**



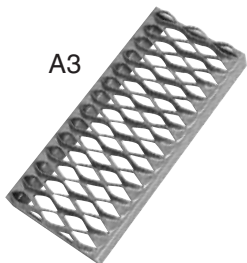
OPTION B4A FOUR WHEEL DUAL END SAFE-LOCK: This safe-lock uses rear mounted swivel casters which allow the ladder to be more maneuverable in confined spaces. Optional on series 1000. 5 to 8 step.

OPTION B9A SIX WHEEL SAFE-LOCK FOR LARGER LADDERS: This safe-lock system adds another pair of swivel casters to allow easy movement around corners. Available on 9 to 16 step models.

U.S. PATENT #6,305,496

OPTIONS

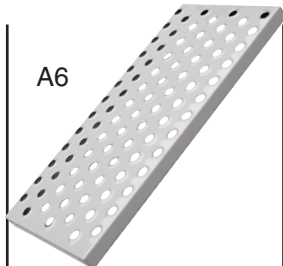
TO MODIFY AND INCREASE YOUR VERSATILITY



A3

GRIP STRUT

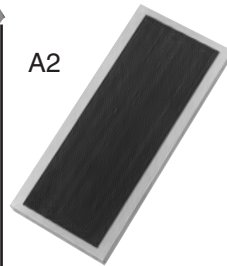
Heavy duty, most rugged self-cleaning step available.



A6

PERFORMA PERFORATED

Outperforms in terms of slip resistance all other designs presently on the market. Available on ladders 18" and 26" wide.



A2

RUBBER TREAD

Solid metal step with non-slip ribbed rubber tread. Designed for use in offices.



DEEP TOP STEP

20" deep, order option E20
30" deep, order option E30.

Cotterman®

10 STEP WITH HANDRAILS
AND SAFE-LOCK
MODEL NO. 1510R2632

COTTERMAN SERIES 1500 steel safety ladders are shipped knocked down in major welded subassemblies to save freight. Cotterman's exclusive knocked down design, incorporating diagonal braces together with heavy duty hardware, gives an unusually rigid structure that is easily assembled.

FEATURES:

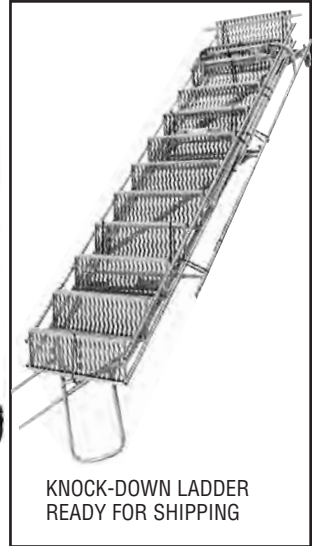
- 3 and 4 step ladders are equipped with spring loaded 2" ball bearing swivel casters.
- 5 to 12 step ladders have the Cotterman Safe-Lock.
- 13 to 16 step ladders are equipped with the Cotterman heavy duty Safe-Lock. The expanded metal top step is 10" deep with 42" high guardrails with midrails.
- Series 1500 ladders comply with OSHA 1910.29 and ANSI A14.7 standards with a 450 lb. load rating. Cal-OSHA models also available.

KNOCKED-DOWN

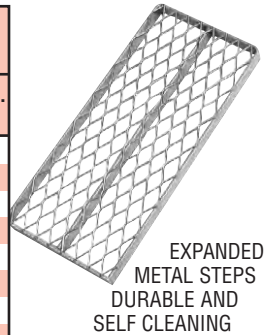
SERIES 1500

KNOCKED-DOWN STEEL SAFETY LADDERS

Larger Casters & Safe-Lock on 5 step & above • Swivel Brake Casters standard on 3-4 step.



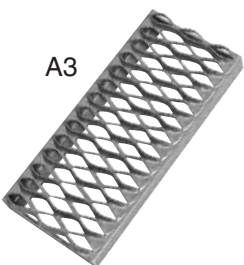
DESCRIPTION: NO. OF STEPS INCL. TOP STEP	TOP STEP HEIGHT	OVERALL HEIGHT	18" WIDE AT TOP			26" WIDE AT TOP			32" WIDE AT TOP		
			MODEL NO.	BASE W"xL"	SHPG. WT.	MODEL NO.	BASE W"xL"	SHPG. WT.	MODEL NO.	BASE W"xL"	SHPG. WT.
3 STEP WITH HANDRAILS	30"	60"	*1503R1820	20x26	43	*1503R2630	30x26	49	-	-	-
4 STEP WITH HANDRAILS	40"	70"	*1504R1820	20x33	56	1504R2630	30x33	62	**1504R3232	32x33	75
5 STEP WITH HANDRAILS	50"	80"	1505R1820	20x40	85	1505R2630	30x40	97	1505R3232	32x40	116
6 STEP WITH HANDRAILS	60"	90"	1506R1824	24x46	102	1506R2630	30x46	113	1506R3232	32x46	136
7 STEP WITH HANDRAILS	70"	100"	1507R1824	24x53	111	1507R2630	30x53	123	1507R3232	32x53	145
8 STEP WITH HANDRAILS	80"	110"	-	-	-	1508R2632	32x58	158	1508R3232	32x58	184
9 STEP WITH HANDRAILS	90"	120"	-	-	-	1509R2632	32x65	170	1509R3232	32x65	191
10 STEP WITH HANDRAILS	100"	130"	-	-	-	1510R2632	32x72	181	1510R3232	32x72	201
11 STEP WITH HANDRAILS	110"	140"	-	-	-	1511R2632	32x78	194	1511R3232	32x78	241
12 STEP LADDERS AND UP REQUIRE A PALLET FOR SHIPPING AT ADDITIONAL COST.											
12 STEP WITH GUARDRAILS	120"	162"	-	-	-	1512R2632	32x88	221	1512R3232	32x88	260
13 STEP WITH GUARDRAILS	130"	172"	-	-	-	1513R2642	42x95	506	1513R3242	42x95	560
14 STEP WITH GUARDRAILS	140"	182"	-	-	-	1514R2642	42x101	551	1514R3242	42x101	606
15 STEP WITH GUARDRAILS	150"	192"	-	-	-	1515R2642	42x108	611	1515R3242	42x108	666
16 STEP WITH GUARDRAILS	160"	202"	-	-	-	1516R2642	42x114	663	1516R3242	42x114	718



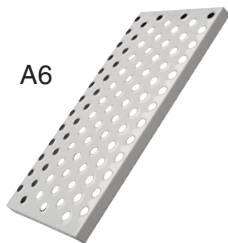
*Shippable via UPS **4 and 5 step 32" wide (with deep platform only)
ladders require B4 safe-lock option.

OPTIONS

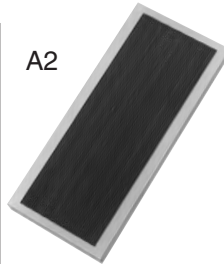
TO MODIFY AND INCREASE YOUR VERSATILITY



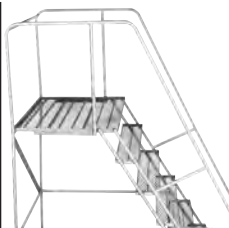
GRIP STRUT
Heavy duty, most rugged self-cleaning step available.



PERFORMA PERFORATED
Outperforms in terms of slip resistance all other designs presently on the market. Available on ladders 18" and 26" wide.

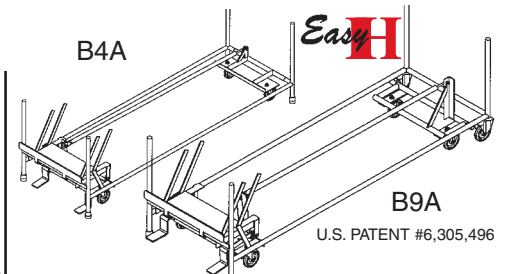


RUBBER TREAD
Solid metal step with non-slip ribbed rubber tread. Designed for use in offices.



DEEP TOP STEP
20" deep, order option E2
30" deep, order option E30.

INCREASES LADDER MANEUVERABILITY TURNS CORNERS EASIER



OPTION B4A FOUR WHEEL DUAL END SAFE-LOCK: This safe-lock uses rear mounted swivel casters which allow the ladder to be more maneuverable in confined spaces. Optional on series 1000. 5 to 8 step.

OPTION B9A SIX WHEEL SAFE-LOCK FOR LARGER LADDERS: This safe-lock system adds another pair of swivel casters to allow easy movement around corners. Available on 9 to 16 step models.

Easy 50



4 STEP MODEL
1204R2630E4A3



8 STEP MODEL
1208R2632A1

SERIES 1200 & 1700 EASY CLIMBING LADDERS

- 50 DEGREE CLIMBING ANGLE PERMITS FORWARD DESCENT TO COMPLY WITH ANSI STANDARDS
- 3 TO 15 STEP STANDING HEIGHTS UP TO 12 1/2'
- TWO TREAD TYPES, THREE WIDTHS
- 450 LB. LOAD CAPACITY RATING AND RUGGED ALL STEEL CONSTRUCTION MEETS OR EXCEEDS OSHA 1910.29 AND ANSI A14.7 STANDARDS
- 1200 SERIES 3 TO 8 STEP SHIP SET-UP. ELIMINATES ON-SITE ASSEMBLY
- 1700 SERIES 9 TO 15 STEP SHIP PACKAGED IN WELDED SUBASSEMBLIES
- 3 AND 4 STEP ARE EQUIPPED WITH RETRACTABLE 2" SPRING LOADED CASTER SYSTEM
- 5 STEP AND ABOVE USE 4" DIA. SAFE-LOCK CASTER SYSTEM
- STANDARD 12" DEEP TOP STEP
- STANDARD GRAY POWDER COATED COLOR. NO CHARGE OPTIONS ARE YELLOW, BEIGE, DARK BROWN AND ORANGE
- CAL-OSHA MODELS ALSO AVAILABLE

DESCRIPTION: NO. OF STEPS INCLUDING TOP PLATFORM	PLATFORM HEIGHT	OVERALL HEIGHT	18" WIDE AT TOP			26" WIDE AT TOP			32" WIDE AT TOP		
			MODEL NO.	BASE W"xL"	SHPG. WT.	MODEL NO.	BASE W"xL"	SHPG. WT.	MODEL NO.	BASE W"xL"	SHPG. WT.
3 NO RAILS	30"	30"	1203N1820	20x32	37	1203N2630	30x32	44	-	-	-
3 HANDRAILS	30"	60"	1203R1820	20x32	44	1203R2630	30x32	50	-	-	-
4 NO RAILS	40"	40"	1204N1820	20x40	47	1204N2630	30x40	56	1204N3232	32x40	68
4 HANDRAILS	40"	70"	1204R1820	20x40	54	1204R2630	30x40	62	1204R3232	32x40	76
5 HANDRAILS	50"	80"	1205R1820	20x51	75	1205R2630	30x51	91	1205R3232	32x51	96
6 HANDRAILS	60"	90"	1206R1824	24x60	104	1206R2630	30x60	120	1206R3232	32x60	139
7 HANDRAILS	70"	100"	1207R1824	24x69	122	1207R2630	30x69	139	1207R3232	32x69	160
8 HANDRAILS	80"	110"	1208R1824	24x76	135	1208R2632	30x78	156	1208R3232	32x78	180
9 HANDRAILS	90"	120"	-	-	-	1709R2632	32x88	178	1709R3232	32x88	205
10 HANDRAILS	100"	130"	-	-	-	1710R2632	32x97	191	1710R3232	32x97	222
11 HANDRAILS	110"	140"	-	-	-	1711R2632	32x106	204	1711R3232	32x106	238
12 GUARDRAILS	120"	162"	-	-	-	1712R2632	32x116	236	1712R3232	32x116	271
13 GUARDRAILS	130"	172"	-	-	-	1713R2642	44x125	526	1713R3242	44x125	580
14 GUARDRAILS	140"	182"	-	-	-	1714R2642	44x134	571	1714R3242	44x134	626
15 GUARDRAILS	150"	192"	-	-	-	1715R2642	44x143	631	1715R3242	44x143	686

12 STEP LADDERS AND UP REQUIRE A PALLET FOR SHIPPING AT ADDITIONAL COST.

COTTERMAN SERIES 2600 is a superior line of knocked down steel safety ladders. Designed and constructed for extra heavy duty use, these ladders have extra bracing and heavier materials to resist damage. They are offered in 9-15 step sizes and are shipped knocked down and crated for safe handling.

FEATURES:

- The easy 50° climbing angle permits forward descent to comply with ANSI standards.
- 450 lb. load rating exceeds OSHA ANSI requirements.
- Larger 1 1/4" o.d. tubular base and back.
- 7" steps and 12" top step available in three tread types.
- Ladders are provided with the Cotterman heavy duty Safe-Lock caster system.
- Gray powder coat is the standard finish. Beige, dark brown, yellow, black, green, blue, red, white, orange and light gray are available.
- The Series 2600 meets or exceeds OSHA 1910.29, ANSI A14.7. Cal-OSHA models also available.

HEAVY DUTY KNOCK-DOWN

SERIES 2600

DESCRIPTION: NO. OF STEPS INCL. TOP STEP	TOP STEP HT.	OVERALL HT.	26" WIDE AT TOP			32" WIDE AT TOP		
			MODEL NO.	BASE W"xL"	WT.	MODEL NO.	BASE W"xL"	WT.
9 HANDRAILS	90"	120"	2609R2632	32x88	178	2609R3232	32x88	211
10 HANDRAILS	100"	130"	2610R2632	32x97	195	2610R3232	32x97	230
11 HANDRAILS	110"	140"	2611R2632	32x106	230	2611R3232	32x106	255
12 GUARDRAILS	120"	162"	2612R2632	32x116	258	2612R3232	32x116	283
13 GUARDRAILS	130"	172"	2613R2642	42x125	536	2613R3242	42x125	573
14 GUARDRAILS	140"	182"	2614R2642	42x134	575	2614R3242	42x134	613
15 GUARDRAILS	150"	192"	2615R2642	42x143	606	2615R3242	42x143	650

12 STEP LADDERS AND UP REQUIRE A PALLET FOR SHIPPING AT ADDITIONAL COST.

Easy 50

9 STEP
KNOCK-DOWN
MODEL NO.
2609R2632A1

NEW HEAVY DUTY DAMAGE RESISTANT LADDERS

LADDER READY FOR SHIPPING

OPTIONS

A1 EXPANDED METAL STEPS
durable and self cleaning.

A3 GRIP STRUT
Heavy duty, most rugged self-cleaning step available.

A6 PERFORMA PERFORATED
Outperforms in terms of slip resistance all other designs presently on the market. Available on ladders 26" wide. Option A6 for no additional charge.

24" DEEP TOP STEP
Your choice of Expanded Metal, Grip Strut or Performa Perforated top step.



TILT NROLL® LADDERS

U.S. PATENT #5,082,086

- 4 STANDING HEIGHTS • ALUMINUM
- 304 STAINLESS STEEL • POWDER COATED STEEL

The new, patented TILT NROLL® features a special balanced design that allows it to tilt easily to the rolling position when pulled toward the user. The use is not required to extend a foot to assist in tilting the ladder to the rolling position. Once tilted, the ladder can be easily moved from job to job on the two 4" diameter wheels.

TILT NROLL® ladders are one-piece welded assemblies shipped ready to use. The ladders are supplied with handrails that extend 30" above the top step. They are designed to meet or exceed OSHA 1910.29 and ANSI A14.7 standards. Cal-OSHA models are also available. Steel and stainless steel models have 450 lb. rating, aluminum has 350 lbs.



CHOOSE FROM EXPANDED METAL OR GRIP STRUT STEPS	NO. OF STEPS	TOP STEP HT.	SINGLE TOP STEP						DOUBLE TOP STEP					
			16"Wx10"D			24"Wx10"D			16"Wx20"D			24"Wx20"D		
			MODEL NO.	BASE W"xL"	SHPG. WT.	MODEL NO.	BASE W"xL"	SHPG. WT.	MODEL NO.	BASE W"xL"	SHPG. WT.	MODEL NO.	BASE W"xL"	SHPG. WT.
POWDER COATED STEEL: standard color, gray - available: safety yellow, orange, dark brown and black														
EXPANDED METAL	2	20"	2TR18	20x24	34	2TR26	28x24	39	2TR18E4	20x34	49	2TR26E4	28x34	56
	3	30"	3TR18	20x30	44	3TR26	28x30	50	3TR18E4	20x41	59	3TR26E4	28x41	67
	4	40"	4TR18	20x37	50	4TR26	28x37	61	4TR18E4	20x47	68	4TR26E4	28x47	77
	5	50"	5TR18	20x43	60	5TR26	28x43	75	5TR18E4	20x54	77	5TR26E4	28x54	92
GRIP STRUT	2	20"	2TR18A3	20x24	36	2TR26A3	28x24	41	2TR18A3E4	20x34	50	2TR26A3E4	28x34	57
	3	30"	3TR18A3	20x30	46	3TR26A3	28x30	53	3TR18A3E4	20x41	60	3TR26A3E4	28x41	69
	4	40"	4TR18A3	20x37	56	4TR26A3	28x37	65	4TR18A3E4	20x47	69	4TR26A3E4	28x47	80
	5	50"	5TR18A3	20x43	66	4TR26A3	28x43	77	5TR18A3E4	20x54	80	4TR26A3E4	28x54	93
#304 STAINLESS STEEL: sand blasted satin finish														
EXPANDED METAL	2	20"	2TS18	20x24	34	2TS26	28x24	39	2TS18E4	20x34	49	2TS26E4	28x34	56
	3	30"	3TS18	20x30	44	3TS26	28x30	50	3TS18E4	20x41	59	3TS26E4	28x41	67
	4	40"	4TS18	20x37	50	4TS26	28x37	61	4TS18E4	20x47	68	4TS26E4	28x47	77
	5	50"	5TS18	20x43	60	5TS26	28x43	75	5TS18E4	20x54	77	5TS26E4	28x54	92
GRIP STRUT	2	20"	2TS18A3	20x24	36	2TS26A3	28x24	41	2TS18A3E4	20x34	50	2TS26A3E4	28x34	57
	3	30"	3TS18A3	20x30	46	3TS26A3	28x30	53	3TS18A3E4	20x41	60	3TS26A3E4	28x41	69
	4	40"	4TS18A3	20x37	56	4TS26A3	28x37	65	4TS18A3E4	20x47	69	4TS26A3E4	28x47	80
	5	50"	5TS18A3	20x43	66	4TS26A3	28x43	77	5TS18A3E4	20x54	80	4TS26A3E4	28x54	93
ALUMINUM: 6061-T6 high strength alloy														
GRIP STRUT	2	20"	2TA18A3	20x24	19	2TA26A3	28x24	21	2TA18A3E4	20x34	21	2TA26A3E4	28x34	26
	3	30"	3TA18A3	20x30	23	3TA26A3	28x30	27	3TA18A3E4	20x41	27	3TA26A3E4	28x41	31
	4	40"	4TA18A3	20x37	27	4TA26A3	28x37	31	4TA18A3E4	20x47	31	4TA26A3E4	28x47	35
	5	50"	5TA18A3	20x43	31	5TA26A3	28x43	36	5TA18A3E4	20x54	36	5TA26A3E4	28x54	41

A6

OPTIONAL PERFORATED TREAD

Outperforms in terms of slip resistance all other designs presently on the market. **Option A6** for no additional charge.



NEW

STRADDLE BASE TILT NROLL®

The TILT NROLL® design was patented in 1992, and has since become one of the most popular ladders in the market. Simply pull back on the handrails (it is not necessary to place a foot on the first step) and the ladder transfers from the front rubber pads to the wheels. It is perfectly balanced in the rolling position and will not slide toward the user when tilted back onto the pads. Climbing angle is 59 degrees.

The new Straddle Base TILT NROLL® was developed with a slight variation to the standard design. The base bars were removed to allow the front and rear of the ladders to straddle any obstructions, allowing the user to climb the ladder it tight spaces. The ladder is manufactured with expanded metal treads and a durable gray powdercoat paint finish. The rated load capacity is 350 lbs.

MODEL NO.	NO. OF STEPS	PLAT-FORM HT.	HAND-RAIL HT.	STEP W.	PLATFORM SIZE W"xL"	BASE SIZE W"xL"	SHPG. WT.
3STRA1	3	30"	30"	24"	24x20	28x41	67
4STRA1	4	40"	30"	24"	24x20	28x47	77
*5STRA1	5	50"	30"	24"	24x20	28x54	92
*6STRA1	6	60"	30"	24"	24x20	28x60	106

*For Cal-OSHA-compliant model, please add suffix "CO" to model number.



WELDED ALUMINUM SAFETY LADDERS **SERIES A**

COTTERMAN ALUMINUM SERIES "A" SAFETY LADDERS are one-piece set-up assemblies of high strength aluminum alloy. The solid ribbed aluminum steps and top step provide sure footing in areas where dress shoes or high heels are worn. In addition to being lightweight, aluminum ladders are corrosion resistant and easy to clean. They are also non-magnetic.

FEATURES:

- The structural framework is of 1" O.D. 6061-T6 high strength aluminum alloy tube.
- Both the steps and the top step are 16" or 24" wide and available in solid ribbed extruded aluminum alloy or aluminum grip strut. The steps are 7" deep. The top step is 14" deep.
- All ladders are provided with spring loaded 2" ball bearing swivel brake casters and reinforced rubber tipped legs.
- Ladders are normally furnished with unpainted aluminum mill finish.
- Series A aluminum ladders comply with OSHA 1910.29 and ANSI A14.7 standards with a 350 lb. load rating. Cal-OSHA models also available.

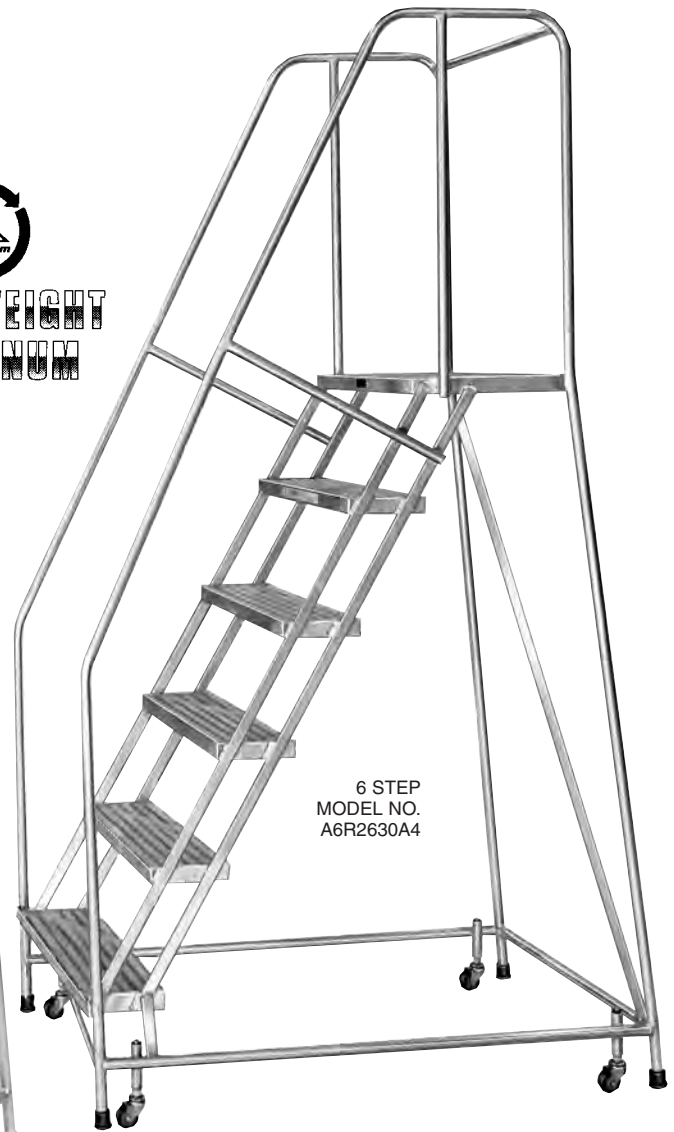


LIGHTWEIGHT ALUMINUM

3 STEP
MODEL NO.
A3R2630A3



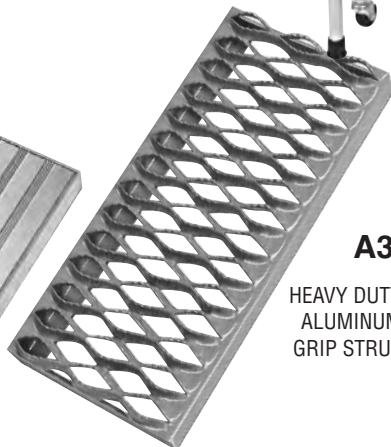
6 STEP
MODEL NO.
A6R2630A4



A4
SOLID
RIBBED
ALUMINUM
STEPS



A3
HEAVY DUTY
ALUMINUM
GRIP STRUT



NO. STEPS INCL. TOP STEP	TYPE OF RAILS	TOP STEP HT.	OVER-ALL HT.	18" WIDE AT TOP			26" WIDE AT TOP		
				MODEL NO.	BASE W"xL"	SHPG. WT.	MODEL NO.	BASE W"xL"	SHPG. WT.
1	NONE	12"	12"	*A1N1818	18x20	12	*A1N2626	26x20	14
2	NONE	20"	20"	*A2N1820	20x23	15	*A2N2626	26x23	20
2	HAND	20"	50"	A2R1820	20x23	18	A2R2626	26x23	23
3	NONE	30"	30"	A3N1822	22x29	20	A3N2630	30x29	26
3	HAND	30"	60"	A3R1822	22x29	23	A3R2630	30x29	29
4	NONE	40"	40"	A4N1822	22x36	24	A4N2630	30x36	32
4	HAND	40"	70"	A4R1822	22x36	28	A4R2630	30x36	36
5	HAND	50"	80"	A5R1822	22x43	34	A5R2630	30x43	43
6	HAND	60"	90"	A6R1824	24x50	39	A6R2630	30x50	49
7	HAND	70"	100"	-	-	-	A7R2630	30x57	55
8	HAND	80"	110"	-	-	-	A8R2630	30x63	90

*Shippable via UPS

COTTERMAN COMPANY IS PROUD TO BE A MEMBER OF THE FOLLOWING ASSOCIATIONS:

MEMBER
ANSI

MHIA
The Material Handling Industry of America
MEMBER COMPANY

MEMBER
SCAFFOLD
INDUSTRY
ASSOCIATION
SIA

National Safety Council

OPTIONS

RUBBER TIPPED LEGS

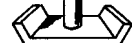
can be substituted for casters, no charge.

B1



SKID PLATES can be substituted for casters, no charge

B7



3 STEP WITH HANDRAILS AND SAFE-LOCK MODEL NO. 3WP3660RL

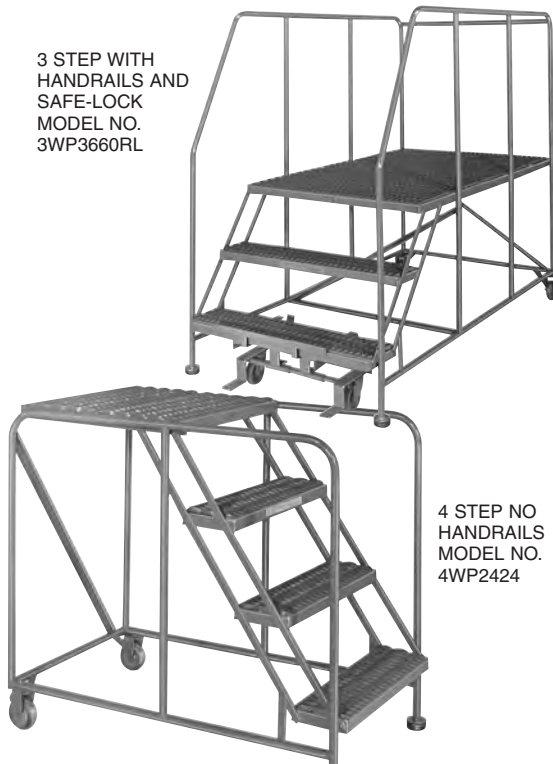
Easy 50

WELDED STEEL WORK PLATFORMS

THE COTTERMAN SERIES WP one-piece set-up steel work platforms are designed for safe access to required work levels. WP work platforms are easily moved from job to job on the rear 4" rigid casters. For greater mobility, the optional Safe-Lock assembly can be specified. The easy 50° climbing angle permits forward descent to comply with ANSI standards.

HEAVY DUTY FEATURES:

- 800 pound load rating complies with OSHA 1910.29 and ANSI standards for use by one or two persons.
- Large 2 1/2" diameter, 1" thick rubber pads on the front legs hold the standard platform secure during use.
- Two 4" rigid heavy duty casters on the rear are standard. The optional Cotterman Safe-Lock on the step side provides greater mobility.
- Steps and platforms are constructed of heavy duty non-slip Grip Strut supported by a rugged 1" O.D. tubular frame. Special designs are available.
- Gray powder coat finish is standard color.
- Full 36" high handrails are provided on 5 thru 7 step models. 30" handrails optional on 2 thru 4 step models.
- Cal-OSHA models also available.



4 STEP NO HANDRAILS MODEL NO. 4WP2424

SERIES WP

WELDED STEEL WORK PLATFORMS

NO. STEPS INCL. TOP PLATFORM	PLAT-FORM HT.	TYPE OF RAILS	PLAT-FORM WIDT	24" LONG PLATFORM			36" LONG PLATFORM			48" LONG PLATFORM			60" LONG PLATFORM		
				MODEL NO.	BASE W"xL"	WT.	MODEL NO.	BASE W"xL"	WT.	MODEL NO.	BASE W"xL"	WT.	MODEL NO.	BASE W"xL"	WT.
2	20"	NONE	24"	2WP2424	28x34	51	2WP2436	29x46	65	2WP2448	28x58	77	2WP2460	28x70	92
2	20"	NONE	36"	2WP3624	40x34	66	2WP3636	40x46	86	2WP3648	40x58	102	2WP3660	40x70	125
3	30"	NONE	24"	3WP2424	28x43	66	3WP2436	28x55	81	3WP2448	28x66	93	3WP2460	28x78	108
3	30"	NONE	36"	3WP3624	40x43	84	3WP3636	40x55	105	3WP3648	40x66	121	3WP3660	40x78	144
4	40"	NONE	24"	4WP2424	28x51	81	4WP2436	28x63	97	4WP2448	28x75	101	4WP2460	28x86	136
4	40"	NONE	36"	4WP3624	40x51	102	4WP3636	40x63	124	4WP3648	40x75	140	4WP3660	40x86	175
5	50"	HAND	24"	5WP2424R	28x58	96	5WP2436R	28x70	113	5WP2448R	28x82	125	5WP2460R	28x94	153
5	50"	HAND	36"	5WP3624R	40x58	120	5WP3636R	40x70	143	5WP3648R	40x82	159	5WP3660R	40x94	195
6	60"	HAND	24"	6WP2424R	28x67	111	6WP2436R	28x78	128	6WP2448R	28x90	140	6WP2460R	28x102	168
6	60"	HAND	36"	6WP3624R	40x67	138	6WP3636R	40x78	155	6WP3648R	40x90	167	6WP3660R	40x102	195
7	70"	HAND	24"	7WP2424R	28x75	126	7WP2436R	28x87	143	7WP2448R	28x99	155	7WP2460R	28x110	183
7	70"	HAND	36"	7WP3624R	40x75	156	7WP3636R	40x87	173	7WP3648R	40x99	185	7WP3660R	40x110	213

OPTION R - full 30" high handrails on 2 thru 4 step ladders \$

OPTION L - Safe-Lock caster system under front step, 3 thru 7 step ladders \$

4 STEP MODEL NO. 4DWP2472RL

COTTERMAN SERIES DWP welded steel work platform provides dual entry access in a wide range of platform sizes. DWP work platforms are desirable in work areas that require quick, convenient, and efficient access to required work levels.

HEAVY DUTY FEATURES:

- The 800 pound load rating complies with OSHA 1910.29 and ANSI A14.7 standards for use by one or two persons.
- Steps and top platform are fabricated from heavy duty non-slip Grip Strut supported by a rugged 1" O.D. tubular frame. Special designs are available.
- All units have 36" high handrails which are shipped knocked down for field assembly in minutes.
- Exclusive heavy duty Cotterman Safe-Lock is provided at both ends for mobility.
- 2 1/2" diameter, 1" thick rubber pads on four legs hold the platform secure during use.
- Gray powder coat finish is standard color.
- Cal-OSHA models also available.

SERIES DWP

WELDED STEEL DOUBLE WORK PLATFORMS



NO. STEPS INCL. TOP PLATFORM	PLAT-FORM HT.	PLAT-FORM WIDTH	48" LONG PLATFORM			60" LONG PLATFORM			72" LONG PLATFORM			84" LONG PLATFORM		
			MODEL NO.	BASE W"xL"	WT.	MODEL NO.	BASE W"xL"	WT.	MODEL NO.	BASE W"xL"	WT.	MODEL NO.	BASE W"xL"	WT.
3	30"	24"	3DWP2448RL	28x75	190	3DWP2460RL	28x87	212	3DWP2472RL	28x99	234	3DWP2484RL	28x111	256
3	30"	36"	3DWP3648RL	40x75	211	3DWP3660RL	40x87	232	3DWP3672RL	40x99	254	3DWP3684RL	40x111	266
4	40"	24"	4DWP2448RL	28x87	218	4DWP2460RL	28x99	240	4DWP2472RL	28x111	264	4DWP2484RL	28x123	283
4	40"	36"	4DWP3648RL	40x87	238	4DWP3660RL	40x99	260	4DWP3672RL	40x111	284	4DWP3684RL	40x123	303
5	50"	24"	5DWP2448RL	28x99	246	5DWP2460RL	28x111	268	5DWP2472RL	28x123	290	5DWP2484RL	28x135	311
5	50"	36"	5DWP3648RL	40x99	266	5DWP3660RL	40x111	288	5DWP3672RL	40x123	310	5DWP3684RL	40x135	331
6	60"	24"	6DWP2448RL	28x111	274	6DWP2460RL	28x123	296	6DWP2472RL	28x135	318	6DWP2484RL	28x147	339
6	60"	36"	6DWP3648RL	40x111	294	6DWP3660RL	40x123	316	6DWP3672RL	40x135	338	6DWP3684RL	40x147	359
7	70"	24"	7DWP2448RL	28x123	302	7DWP2460RL	28x135	324	7DWP2472RL	28x147	340	7DWP2484RL	28x159	367
7	70"	36"	7DWP3648RL	40x123	322	7DWP3660RL	40x135	344	7DWP3672RL	40x147	360	7DWP3684RL	40x159	387

FOLDS FOR
EASY
TRANSPORTING



MODEL NO.
6507R1830A3

LARGE 10" DIA.
SEMI-PNEUMATIC
WHEELS

SERIES 6500

WELDED STEEL ROLL-N-FOLD LADDER

THE COTTERMAN SERIES 6500 ROLL-N-FOLD LADDER is a portable steel safety ladder that can be folded for transporting. The rear of the ladder has large 10" diameter semi-pneumatic wheels allowing it to roll easily. Large rubber pads on the front legs hold the ladder secure during use. The ladder is moved by tilting and rolling it like a wheelbarrow. The B4 safelock is standard on 10-16 step models, but also available on 5-9 step models for additional charge.

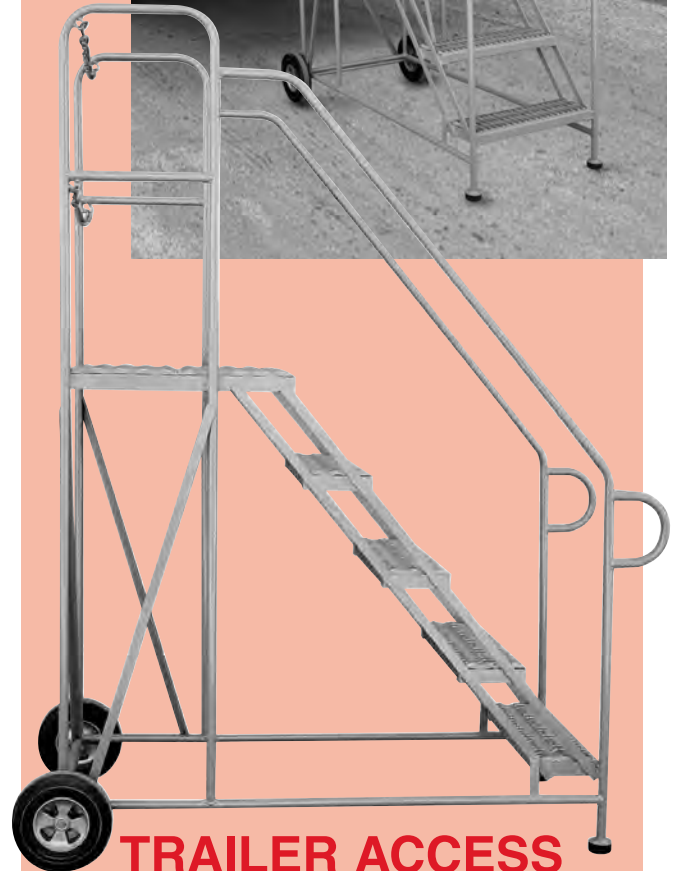
FEATURES:

- Rigid 1" O.D. tubular frame is designed to be folded.
- Large 10" diameter ball bearing semi-pneumatic wheels are mounted on heavy 3/4" axles.
- Treads are 7" deep and 16" wide, and are available in A1 expanded metal or A3 Grip Strut. The standard top step is 10" deep and 16" wide, deep tops are 20" deep by 16" wide.
- Gray powder coat is the standard finish. Beige, dark brown, yellow, black, green, blue, red, white, orange and light gray are available.
- Series 6500 ladders comply with OSHA 1910.29 and ANSI A14.7 standards with a 300 lb. load rating. Cal-OSHA models also available.

NO. STEPS INCL. TOP STEP	TOP STEP HEIGHT	OVERALL HEIGHT W/RAILS	BASE W"xL"	APPR. FOLDED DIMENSIONS W"xL"xH"	SHPG. WT.	MODEL NO.
5	50"	80"	30x46	32x86x24	85	6505R1830
6	60"	90"	30x53	32x98x24	95	6506R1830
7	70"	100"	30x58	32x110x24	105	6507R1830
8	80"	110"	30x65	32x122x24	127	6508R1830
9	90"	120"	30x72	32x134x24	158	6509R1830
10	100"	130"	30x78	32x146x24	175	6510R1830
11	110"	140"	30x86	32x158x24	190	6511R1830
12	120"	162"	30x92	32x176x36	203	*6512R1830
13	130"	172"	40x99	42x188x36	475	*6513R1840
14	140"	182"	40x106	42x200x36	545	*6514R1840
15	150"	192"	40x112	42x212x36	585	*6515R1840
16	160"	202"	40x119	42x224x36	610	*6516R1840

*These models are palletized for shipment at additional cost.

Option B4 safelock is available on 5-9 step models at additional cost, but is standard on 10 step and up.



TRAILER ACCESS LADDER

The new trailer access ladder offers easy entry to tractor and cube vans in places where loading docks and bays are not available or convenient. The 5 step (50" top step height) ladder can be moved easily on (2) two 10" semi-pneumatic rear wheels and is provided with slip resistant heavy duty grip strut treads. The easy 50 degree climbing angle permits forward descent to comply with ANSI standards.

FEATURES:

- Steps and platform are constructed of heavy-duty non-slip grip strut, supported by 1" O.D. tubular frame
- Two heavy-duty 10" semi-pneumatic rear wheels with large 2 1/2" rubber pads on front legs
- 800 pound load rating exceeds OSHA 1910.29 and ANSI A14.7 standards
- Gray powder coat finish is standard
- Full 36" high handrails with removable snap hook chains
- Cal-OSHA model also available

Model #5TAP2424R

Step width 24", platform size 24"x24", base dim. 30"Wx60"L

SPECIAL PURPOSE LADDERS



SERIES 4000 CANTILEVER LADDERS

FEATURES:

- Framework is 1" O.D. steel tubing. Base is 2"x2"x1/4" steel angle. Can be folded for shipping or storing.
- Steps are 24"Wx7"D. Top step is 24"Wx10"D (24"Wx20"D with E4-20).
- Horizontal distance from rear of base to verticle support is 32" (8-12 step), 26" (7 step), 20" (6 step), and 14" (5 step).
- 4" rigid castes on rear, 4" swivel casters with SafeLock on front, and 2 1/2" dia. rubber pads on legs.
- Gray powder coat is standard finish.
- Meets or exceeds OSHA 1910.29 and ANSI A14.7 standards with a 300 lb. load rating.

NO. STEPS	TOP STEP HT.	O.A. HT.	BASE W"xL"	SHPG. WT.	MODEL NO.
5	50"	80"	32x41	140	4005R2632
6	60"	90"	32x47	155	4006R2632
7	70"	100"	32x53	170	4007R2632
8	80"	110"	32x59	185	4008R2632
9	90"	120"	32x66	200	4009R2632
10	100"	130"	32x73	215	4010R2632
11	110"	140"	32x79	230	4011R2632
12	120"	162"	32x85	245	4012R2632



POWDER
COATED
TOUGH™

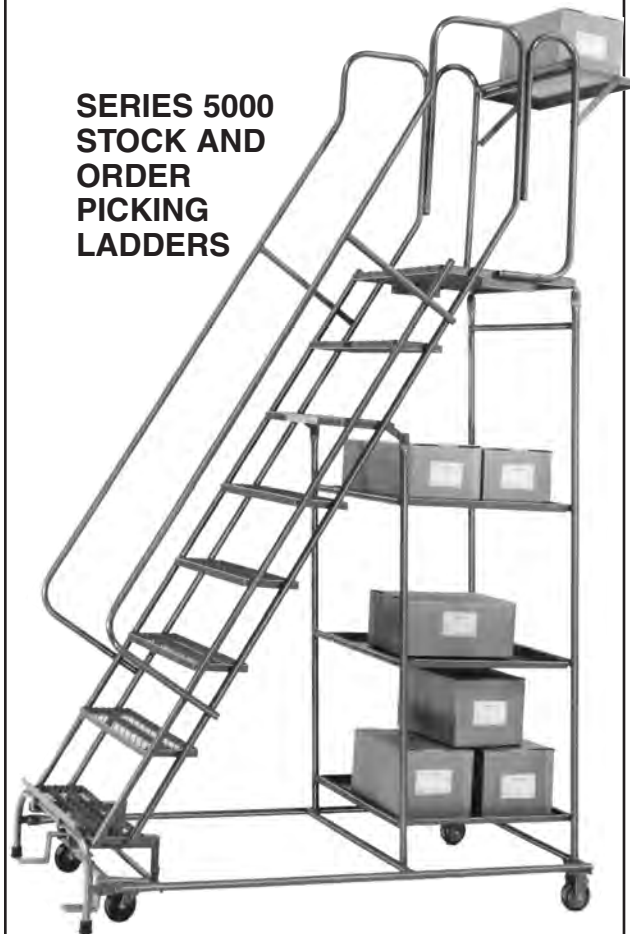


MODEL
1WP2424A5-8

ADJUSTABLE ONE STEP WORK PLATFORMS

Adjusts 5" to 8" or 9" to 14", to meet your varying work levels. Platforms may be placed side by side or end to end for greater standing area. Grip strut surface, gray powder coat finish is standard. Load rating is 800 lbs.

SERIES 5000 STOCK AND ORDER PICKING LADDERS



Cotterman series 5000 all-welded steel stockpicking safety ladders offer the advantages of a rugged one-piece welded ladder with the versatility of a stockpicking truck. Available in six (6) different heights, each unit has two (6-7 step) or three (8-11 step) 24"x24" heavy gauge steel shelves plus a 24"Wx20"D top step with 10" folding platform workshelf. They are fabricated from heavy duty 1" O.D. tubular steel and have a combined 500 lb. load rating consisting of 300 lbs. for the ladder and 200 lbs. for the storage shelves. Powder coat finish standard.

Five colors to choose from: Gray, black, beige, yellow or dark brown.

NO. OF STEPS INCL. TOP STEP	TOP STEP HEIGHT	OVERALL HEIGHT	MODEL NO.	BASE W"xL"	SHPG. WT.
6	60"	90"	5006R2630	30x56	153
7	70"	100"	5007R2630	30x63	180
8	80"	110"	5008R2632	32x68	239
9	90"	120"	5009R2632	32x75	246
10	100"	130"	5010R2632	32x83	256
11	110"	140"	5011R2632	32x88	296

MODEL NO.	HT. ADJ.	SIZE L"xW"	NO. LEGS	SHPG. WT.
1WP2424A5-8	5"-8"	24x24	4	24
1WP2436A5-8	5"-8"	36x24	4	32
1WP2448A5-8	5"-8"	48x24	4	40
1WP2460A5-8	5"-8"	60x24	6	48
1WP2472A5-8	5"-8"	72x24	6	59
1WP2496A5-8	5"-8"	96x24	6	76
1WP2424A9-14	9"-14"	24x24	4	29
1WP2436A9-14	9"-14"	36x24	4	37
1WP2448A9-14	9"-14"	48x24	4	45
1WP2460A9-14	9"-14"	60x24	6	53
1WP2472A9-14	9"-14"	72x24	6	64
1WP2496A9-14	9"-14"	96x24	6	81



MODEL
3004N1823A3

SERIES 3000 ACCESS LADDERS—TWIN STEP

Access from both sides makes these welded steel ladders ideal for narrow aisle use. Steps are 7" deep and the platform is 20" deep. Units have spring loaded 2" ball bearing swivel casters. Gray powder coat finish is standard. **CAL-OSHA** models available. Load rating is 300 lbs.

NO. STEPS INCL. PLAT.	PLAT. HT.	O.A. HT.	RAILS	18" WIDE AT TOP			26" WIDE AT TOP		
				MODEL	BASE W"xL"	SHPG. WT.	MODEL	BASE W"xL"	SHPG. WT.
2	20"	20"	GUIDE	3002N1818	18x31	30	3002N2626	26X35	48
3	30"	30"	GUIDE	3003N1820	20x43	47	3003N2630	30X50	68
3	30"	60"	HAND	3003R1820	20x43	56	3003R2630	30X50	77
4	40"	40"	GUIDE	3004N1823	23x55	62	3004N2630	30X65	86
4	40"	70"	HAND	3004R1823	23x55	70	3004R2630	30X65	100
5	50"	80"	HAND	3005R1823	23x67	94	3005R2630	30X80	130

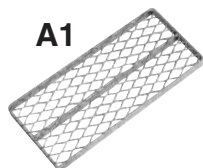
SERIES PC PORTABLE CROSSOVER LADDERS

These rugged one piece welded steel crossovers are constructed of 1" dia. steel tubing with 24" wide treads. Portable steel crossovers are easily moved from place to place. The rubber tipped legs hold unit firmly while in use. 50 degree climbing angle permits forward descent. Load rating is 350 lbs.

Complies with all applicable requirements of OSHA 1910.29 and ANSI A14.7 standards. Comes in standard gray powder coat finish.

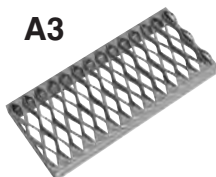
Easy **50**

MODEL
5PC36A3



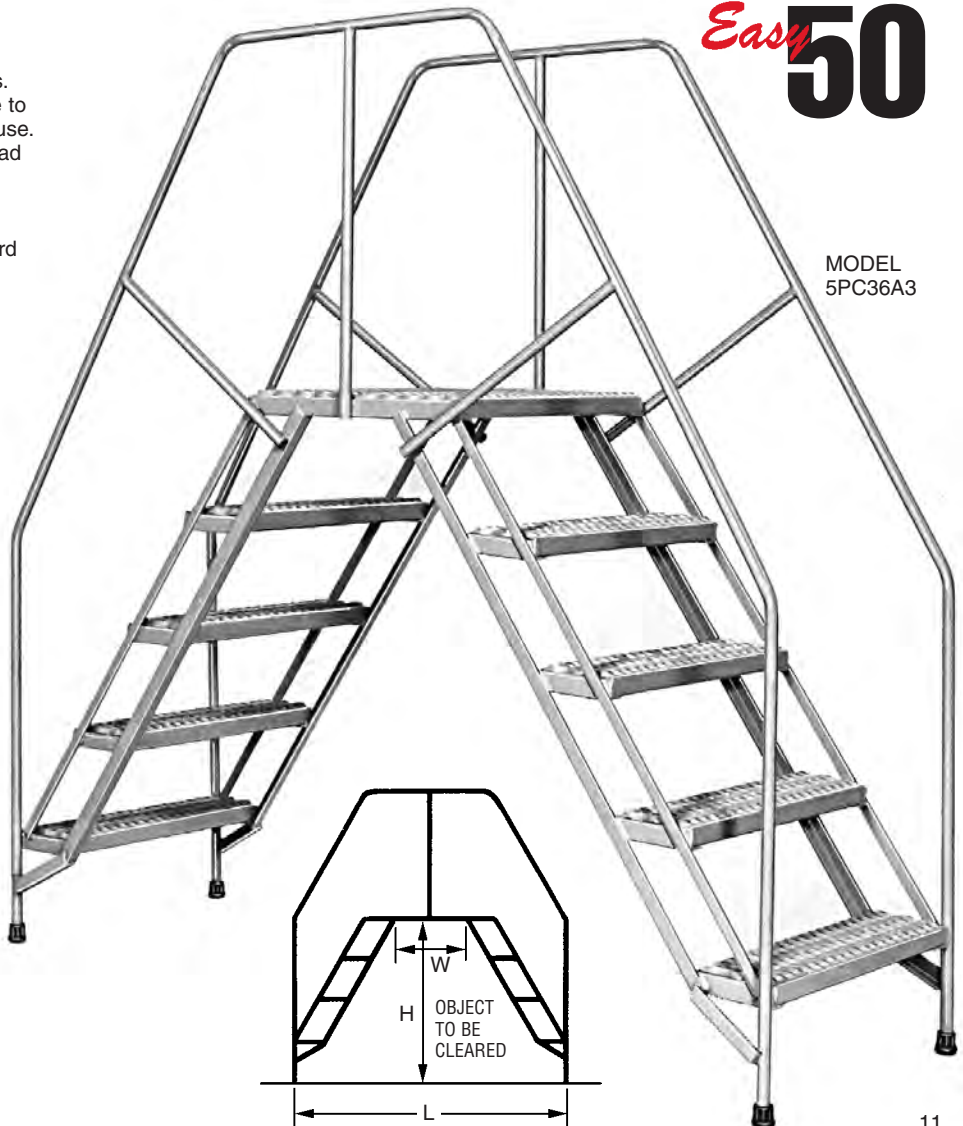
A1

EXPANDED METAL STEPS
durable and self cleanig



A3

GRIP STRUT STEPS
heavy duty, most rugged



MODEL	NO. STEPS INCL. PLAT.	"H" CLEAR HT.	"W" CLEAR W.	O.A. HT.	"L" BASE L.	SHPG. WT.
3PC24	3	28"	10"	60"	58"	80
3PC36	3	28"	22"	60"	69"	90
3PC48	3	28"	32"	60"	82"	100
4PC24	4	38"	10"	70"	76"	110
4PC36	4	38"	22"	70"	87"	120
4PC48	4	38"	32"	70"	100"	130
5PC24	5	48"	10"	80"	93"	140
5PC36	5	48"	22"	80"	104"	154
5PC48	5	48"	32"	80"	116"	180
5PC60	5	48"	46"	80"	128"	210
6PC24	6	58"	10"	90"	110"	170
6PC36	6	58"	22"	90"	121"	188
6PC48	6	58"	32"	90"	134"	222
6PC60	6	58"	46"	90"	146"	256

CAL-OSHA models available

DUAL TRAK[®]

STEEL LADDER SYSTEM

PROVIDES ACCESS TO 33% MORE VERTICAL STORAGE SPACE



SINGLE TRAK LADDER SYSTEM

Cotterman's Single Trak, steel mounted shelf ladder is designed to provide easy access to shelves in narrow aisles and cramped storage areas. These ladders have a smooth rolling upper track fixture and wheels on the floor that allow easy movement of the ladder along the entire length of the track. The upper rolling trolley fixture is mounted on straight track at the front shelf edge. The rugged all-welded steel construction features 5" deep by 14" wide solid steps with abrasive treads. When in use the ladder is positioned at an 80° climbing angle. The standard bottom wheel brake prevents movement during use. An exclusive design permits storage of the ladder in a tight vertical position against the shelves when not in use and allows easy passage of persons or equipment.



DUAL SIDE TRAK LADDER SYSTEM

The patented dual side trak ladder is designed to provide safe, convenient access to tall shelving in high traffic areas. Dual side trak ladders typically use up to 50% less aisle space than free standing ladders. The key to the dual side trak ladder is the overhead trolley carriage on which the ladder is mounted. It moves on two tracks installed the length of the aisle and spaced four feet vertically apart. The result is a single trak ladder that can reach up to 16 feet shelving with as little as 20" of floor space. A comfortable 50° stairway with large tread steps and handrails allows easy ascent and forward descent.

U.S. PATENT #5,480,002 & U.S. PATENT #5,653,307



DUAL TRAK LADDER SYSTEM

The patented steel dual trak ladder is designed to provide safe, convenient access to tall shelving on both side of narrow aisles in storage areas. A 33% increase in vertical storage space is typically achieved. The key to the dual trak ladder is the overhead carriage on which the ladder is mounted. This heavy duty carriage is mounted on dual tracks attached to shelving on both sides of the aisle. The carriage and ladder assembly rolls smoothly on these tracks along the length of the storeroom aisle. Swivel casters on the bottom of the ladder assist in this easy movement and the ladder sets firmly on rubber pad legs while in use. Additionally, the ladder rolls from side to side across the aisle on a track mounted on the carriage.

U.S. PATENT #5,413,191 & U.S. PATENT #6,619,427 B1

ROLLING WOOD LADDERS

ALL COTTERMAN LADDERS ARE CUSTOM MADE TO FIT YOUR SPECIFICATIONS

Every ladder is shipped to size with all mounting holes pre-drilled and ready for assembly. Competitors require the customer to 1) locate and drill for upper fixtures, 2) cut ladder to proper length, and 3) locate and drill for bottom fixtures. This greatly increases the risk of customer error, not to mention inconvenience. So, dollar for dollar, Cotterman rolling ladders save you time and money.

- **PRACTICAL:** The most efficient use of space for the least expensive.
- **DURABLE:** Solid oak construction, as rugged as it is beautiful.
- **SAFE:** Fixed at top to prevent tipping, and they're non-conductive.

STRAIGHT SIDE



Our most popular ladder, the straight side, is an attractive piece of fine oak furniture that blends with any environment. It occupies a minimum of aisle space and allows the user to face shelving while climbing or descending.

It's a full 16" wide with a 5" top shelf for resting merchandise, and when not in use the whole unit swings in at the bottom to occupy less than 9" of aisle space.

Ladder is shipped assembled except for upper and lower fixtures which are easily bolted to the ladder through pre-drilled holes.

BENT SIDE



Designed for areas with protruding counter and shelves. Structural side members are bent near the top or bottom to avoid shelves or cabinets. This keeps the ladder within easy reach of stock items yet maintains freedom of movement up and down aislesways.

Assess the need for a bent side ladder by measuring the depth of the protruding shelf. If that depth is more than 20% of the distance between the top surface of the shelf and the top of the track then a bent side ladder would probably be beneficial.

DUAL TRACK



The patented oak dual track ladder is designed to provide safe, convenient access to tall shelving on both sides of narrow aisles in storage areas. A 33% increase in vertical storage is typically achieved.

The key to the Dual Track Ladder is the overhead carriage on which the ladder is mounted. The ladder rolls smoothly on dual tracks along the length of the stockroom aisle mounted to the upper rolling carriage and its swivel casters at the bottom on the ladder. The ladder also moves from side to side across in the aisle.

U.S. PATENT #5,413,191
U.S. PATENT #6,619,427 B1

SELF-SUPPORTING



Accessible from either end, these durable oak ladders are non-folding, self-supporting, and require no track. Spring loaded 2" ball bearing swivel casters give excellent mobility on hard floors or tight weave carpeting when unoccupied. When occupied legs rest firmly on floor. This ladder is ideal for office record storage areas, banks, libraries, or any low shelving area.

Ladders are designed to conform with OSHA 1910.25 and ANSI A141.1 Safety Standards as heavy duty Type I step and platform ladders.

FIXED STEEL LADDERS - SERIES F AND M

Cotterman fixed steel ladders are designed for use where safe, solid vertical climbing access is required. Series F and Series M modular fixed steel ladders are available with and without walk-thru handrails at the top landing surface. Standard fixed and walk-thru models can be used up to 20'

without safety cages. OSHA requires safety cages on ladder heights exceeding 20'. Separate cages are offered for updating older ladders to current safety standards. All Cotterman fixed ladders meet or exceed ANSI A14.3, OSHA 1910.27 and 1926.1053 standards.



SERIES F FIXED LADDERS: Ladders are heavy duty one-piece welded assemblies.
SERIES M MODULAR FIXED LADDERS: Ladders are heavy duty sub-assemblies, no section is greater than 7' in length.

CONSTRUCTION FEATURES:

- Side members are 1/4"x2"x2" steel angle. Climbing rungs are 3/4" corrugated steel round rungs space on 12" centers. Stand-off brackets are 7".
- Gray powder coat finish is standard color, yellow available.

FIXED LADDERS WITH SAFETY CAGES:

Standard fixed steel ladders are combined with safety cage protection. They are available in 10' through 29' sizes and are ideal for hatch-way or side step landing access.

CAGE FEATURES:

- OSHA design safety cages have flared bottom opening for easy entry.
- Left or right side step access cage designs are available at no charge.
- Cage begins 7' from bottom of ladder.
- Gray powder coat finish, yellow available.



FIXED LADDER WITH WALK-THRU HANDRAILS:

Ladders are designed for applications where safe landing access is required. They are one-piece welded assemblies for use in applications less than 20' in vertical height.

CONSTRUCTION FEATURES:

- Side members are 1/4"x2"x2" steel angle. 3/4" corrugated steel round climbing rungs on 12" centers. Stand-off mounting brackets are 7".
- Walk-thru handrails extend 42" above landing surface. Mounting brackets included.
- Welded one-piece, gray powder coat finish, yellow available.

FIXED LADDER WITH WALK-THRU HANDRAILS AND SAFETY CAGES:

Designed for safe landing access and available from 10' to 29'. Cages and walk-thru handrails extend 42" above landing surface.

CAGE FEATURES:

- Safety cages are designed to OSHA specifications with flared bottom opening for easy entry.
- Cage begins 7' from bottom of ladder.
- Gray powder coat finish, yellow available.

SPECIFICATIONS			STANDARD		WITH CAGE					
OVERALL LENGTH	LENGTH: TOP TO BOTTOM RUNG	NO. RUNGS	SERIES "F" MODEL NO.	SHPG. WT.	SERIES "M" MODEL NO.	SERIES "F" MODEL NO.	SHPG. WT.			
3'3"	3'	4	F4S	41	OSHA NOTE: Although not required by OSHA, safety caging is offered on 11 thru 20 rung models.					
4'3"	4'	5	F5S	50						
5'3"	5'	6	F6S	58						
6'3"	6'	7	F7S	66						
7'3"	7'	8	F8S	75						
8'8"	8'	9	F9S	87						
9'3"	9'	10	F10S	95						
10'3"	10'	11	F11S	104				M11SC	F11SC	202
11'3"	11'	12	F12S	112				M12SC	F12SC	223
12'3"	12'	13	F13S	120				M13SC	F13SC	243
13'3"	13'	14	F14S	129	M14SC	F14SC	260			
14'3"	14'	15	F15S	137	M15SC	F15SC	274			
15'3"	15'	16	F16S	149	M16SC	F16SC	299			
16'3"	16'	17	F17S	158	M17SC	F17SC	318			
17'3"	17'	18	F18S	166	M18SC	F18SC	338			
18'3"	18'	19	F19S	174	M19SC	F19SC	346			
19'3"	19'	20	F20S	183	M20SC	F20SC	368			
20'3"	20'	21	-	-	M21SC	F21SC	388			
21'3"	21'	22	OSHA NOTE: Fixed ladder heights exceeding 20' are required to have safety caging.		M22SC	F22SC	406			
22'3"	22'	23			M23SC	F23SC	421			
23'3"	23'	24			M24SC	F24SC	442			
24'3"	24'	25			M25SC	F25SC	462			
25'3"	25'	26			M26SC	F26SC	482			
26'3"	26'	27			M27SC	F27SC	508			
27'3"	27'	28			M28SC	F28SC	528			
28'3"	28'	29			M29SC	F29SC	548			
29'3"	29'	30			M30SC	F30SC	568			

OSHA NOTE: Heights exceeding 30' require a standoff platform (see option model SP)

SHIPPING NOTE: All 15 thru 28 rung Series F models with cages ship in 2 sections.

All 29 and 30 rung models ship in 3 sections.

14. HOT DIP GALVANIZED FINISH OR STAINLESS STEEL CONSTRUCTION CAN BE QUOTED.

SPECIFICATIONS			WALK-THRU RAIL		WITH WALK THRU & CAGE					
OVERALL LENGTH	LENGTH: TOP TO BOTTOM RUNG	NO. RUNGS	SERIES "F" MODEL NO.	SHPG. WT.	SERIES "M" MODEL NO.	SERIES "F" MODEL NO.	SHPG. WT.			
6'8"	3'	4	F4W	68	OSHA NOTE: Although not required by OSHA, safety caging is offered on 8 thru 20 rung					
7'8"	4'	5	F5W	77						
8'8"	5'	6	F6W	85						
9'8"	6'	7	F7W	93						
10'8"	7'	8	F8W	102						
11'8"	8'	9	F9W	114						
12'8"	9'	10	F10W	122						
13'8"	10'	11	F11W	131				M11WC	F11WC	212
14'8"	11'	12	F12W	139				M12WC	F12WC	224
15'8"	12'	13	F13W	147				M13WC	F13WC	232
16'8"	13'	14	F14W	158	M14WC	F14WC	241			
17'8"	14'	15	F15W	166	M15WC	F15WC	262			
18'8"	15'	16	F16W	178	M16WC	F16WC	282			
19'8"	16'	17	F17W	185	M17WC	F17WC	299			
20'8"	17'	18	F18W	193	M18WC	F18WC	313			
21'8"	18'	19	F19W	201	M19WC	F19WC	338			
22'8"	19'	20	F20W	210	M20WC	F20WC	357			
23'8"	20'	21	-	-	M21WC	F21WC	377			
24'8"	21'	22	OSHA NOTE: Fixed ladder heights exceeding 20' are required to have safety caging.		M22WC	F22WC	385			
25'8"	22'	23			M23WC	F23WC	407			
26'8"	23'	24			M24WC	F24WC	427			
27'8"	24'	25			M25WC	F25WC	445			
28'8"	25'	26			M26WC	F26WC	460			
29'8"	26'	27			M27WC	F27WC	481			
30'8"	27'	28			M28WC	F28WC	501			
31'8"	28'	29			M29WC	F29WC	521			
32'8"	29'	30			M30WC	F30WC	547			

OSHA NOTE: Heights exceeding 30' require a standoff platform (see option model SP)

SHIPPING NOTE: All 15 thru 25 rung Series F models with cages ship in 2 sections.

All 26 thru 30 rung models ship in 3 sections.

HOT DIP GALVANIZED FINISH OR STAINLESS STEEL CONSTRUCTION CAN BE QUOTED.

FIXED STEEL LADDER ACCESSORIES



OPTION SP

STANDOFF LANDING PLATFORM: Standoff landing platforms with offset caged ladders are required by OSHA Standard 1910.27 at 30' maximum height intervals. These rugged, pre-engineered platforms are constructed with left or right entries as required. Load rating is 300 lbs.



OPTION CG

SECURITY CAGE ENTRY GATE: The cage security gate is designed to prevent unauthorized entry into the bottom of the ladder cage. Doors have lockable hasp for complete security.



OPTION LG

SECURITY LADDER GUARD: The ladder guard is mounted directly over the ladder climbing rungs to prevent unauthorized use. It is available in either 6' or 8' lengths. The guard has a one piece piano hinge, and is furnished with lock-open and lock-closed hasps.



OPTION D3

SAFETY CHAIN ATTACHMENT: The safety chain attachment is used on the walk-thru handrails to prevent accidental exit from the top landing surface.

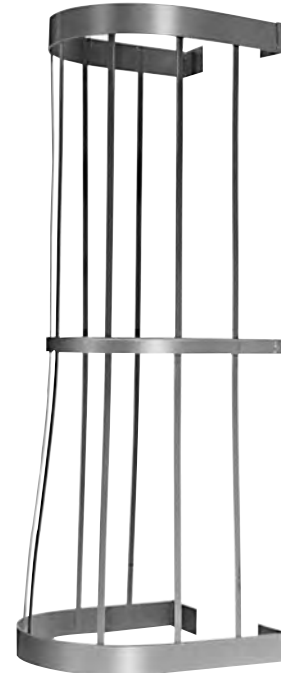
WELDED STEEL CAGES

COTTERMAN SERIES C WELDED STEEL CAGES are one-piece welded assemblies designed for attachment to existing fixed ladders up to 20" wide. A wide range of standard lengths is offered with custom sizes available. To determine the proper length, the cage should begin 7' to 8' from the floor and extend 42" above the landing surface (except for hatchways).

FEATURES:

- Series C cages are designed in compliance with OSHA Standards 1910.27
- Standard cage lengths are available from 7'6" to 27'6".
- Cages are crated for shipping protection.
- Wider bottom flare openings are provided for easy entry.
- One-piece all welded steel with gray powder coat finish.

LENGTH	MODEL NO.	SHPG. WT.
7'6"	C075	234
8'6"	C085	268
9'6"	C095	291
10'6"	C105	313
11'6"	C115	336
12'6"	C125	370
13'6"	C135	393
14'6"	C145	415
15'6"	C155	438
16'6"	C165	472
17'6"	C175	494
18'6"	C185	517
19'6"	C195	539
20'6"	C205	574
21'6"	C215	596
22'6"	C225	619
23'6"	C235	560
24'6"	C245	675
25'6"	C255	698
26'6"	C265	720
27'6"	C275	743



LEFT OR RIGHT EXITS AVAILABLE

WELDED STEEL DOCK LADDERS

One-piece welded assemblies that provide safe access to docks and mezzanines. Walk-thru models have 42" high handrails. Side step models have step rungs plus 4 additional hand rungs. Load rating is 300 lbs.

FEATURES:

- Constructed of 1 1/4" tube with 3/4" non-slip solid round rungs.
- 18" wide steps on side step models and 24" on walk-thru models, spaced on 12" centers.
- Walk-thru models have flat supports for easy mounting.
- Gray powder coat is standard finish.

NO. STEP RUNGS	TOTAL RUNGS	DIM. B	SHPG. WT.	MODEL NO.
2	6	6'	37	D2SS
3	7	7'	40	D3SS
4	8	8'	46	D4SS
5	9	9'	50	D5SS
6	10	10'	57	D6SS
7	11	11'	61	D7SS
8	12	12'	66	D8SS
9	13	13'	70	D9SS
10	14	14'	75	D10SS

NO. STEP RUNGS	DIM. A	SHPG. WT.	MODEL NO.
2	1'6"	36	D2WT
3	2'6"	39	D3WT
4	3'6"	45	D4WT
5	4'6"	49	D5WT
6	5'6"	56	D6WT
7	6'6"	60	D7WT
8	7'6"	64	D8WT
9	8'6"	68	D9WT
10	9'6"	73	D10WT



SIDE STEP 7 RUNG - D3SS



WALK-THRU 4 RUNG - D4WT



Workmaster® Overhead Work Platforms for Forklift Trucks

WORK PLATFORMS — PRODUCTION BOOSTERS FOR FORKLIFT TRUCKS.

Boost the efficiency and versatility of your forklift trucks with the Overhead Work Platforms for Cotterman. Now the leading manufacturer of commercial and industrial ladders takes you to new heights in quick access to overhead maintenance jobs, construction and repairs, stock selection of just simple light bulb replacement. Cotterman Overhead Work Platforms comply with ANSI Standard B56.1-1988: Specification for Platforms Used to Elevate Personnel.

Secured to almost any forklift they convert it to a portable maintenance lift which can be moved readily from job to job. When the work is complete, the platform is removed and the lift truck is available for other service. There is no need to make the investment in a self-powered lift and have it sit idle.

So, if you are looking for an economical platform for overhead work — go with the leader. Step up to quality — step up to Cotterman.

Workmaster® Specifications:

- 1000 lb. capacity • 66"H backguard • 3 3/4"x7 1/2" tine sleeve
- 42" railing ht. • 4" toeboard • 1 1/4" steel tube railing

MODEL	PLATFORM SIZE	TINE SLEEVE SPACING	SHIPPING WEIGHT
WM-100	36"Wx48"D	26" c/c	231 lbs.
WM-101	48"Wx36"D	30" c/c	231 lbs.
WM-103	36"Wx36"D	26" c/c	175 lbs.
WM-104	48"Wx48"D	30" c/c	309 lbs.



Stockmaster®

This companion to the overhead work platform will aid in the selection and inventorying of stock. It too fastens to a standard lift truck and negotiates narrow aisles. Stockmaster® gets the stock handler and pallet to overhead shelves for loading and unloading and, it shares the same durable construction features as the standard work platform. The Stockmaster® is now equipped with a 6' swivel fall protection lanyard mounted overhead to an 84" tall back guard as described in ANSI Standard B56.1. A full body harness for personnel can be purchased separately. The 20"Dx30"W platform with a 4" toeboard gives the attendant room to stand with enough stacking space to handle 42" deep pallet.

- 1000 lb. capacity • 84"H backguard w/6' lanyard • 2 1/2"x5 1/2" tine sleeves • 42" railing ht. • 4" toeboard • 1 1/4" steel tube railing

MODEL	PLATFORM SIZE	TINE SLEEVE SPACING	SHIPPING WEIGHT
SM-301	30"Wx20"D (56" OAL)	26" c/c	202 lbs.

OPTIONS:



HORIZONTAL TUBE CADDY

Option HT: This horizontal caddy slides onto the side rails of the platform and stores 4' and 8' fluorescent tubes. Dual level tray keeps old and new tubes separated.



SLIDING TOOL TRAY

Option TT: This handy workshelf secures to the side rails of the platform. It keeps tools within reach without restricting platform space.



VERTICAL TUBE CADDY

Option VT: Attaches to the side of the platform and holds a box of 4' or 8' fluorescent tubes. Conserves valuable platform space for tool or supply storage.



OVERHEAD GUARD

Option OG: Attachable overhead guard can be used to help protect workers from falling objects. The overall height of the guard is 80" from the platform deck to the top of the guard.

Option GR:

Optional gate for right side of unit.

Option GL:

Optional gate for left side of unit.

Option CO:

Optional California OSHA back guard 84" high.

Option BH:

Full body harness for use on Stockmaster SM-301.



OPTIONAL CASTERS

Option SC: These easy roll 4" casters bolt directly to the bottom of tine sleeves.

SELF-CLOSING SAFETY GATE

- adjustable • easy to install
- versatile • promotes safety

FEATURES:

- Versatile, can be mounted to round rail, square rail, angular rail of up to 2", or a firm reinforced wall surface.
- Stainless steel spring closes the gate after each pass thru.
- Adjustment bolts position the gate and provide a stop without contacting the existing rail.
- Unique gate width is available in two adjustable size ranges: to fit opening of 16" to 26" or 24" to 40". Gate width is adjustable in 2" increments.
- Available in safety yellow powder coated steel, zinc rich powder coat, or stainless steel construction.

PROTECTS PERSONNEL FROM ACCIDENTALLY FALLING THRU OPENINGS



MODEL	ADJ. RANGE	FINISH
AG1626P	16" to 26"	safety yellow powder coat
AG2440P	24" to 40"	safety yellow powder coat
AG1626Z	16" to 26"	zinc powder coat
AG2440Z	24" to 40"	zinc powder coat
AG1626S	16" to 26"	stainless steel
AG1440S	24" to 40"	stainless steel

LIFT TABLE LADDER

5 step thru 8 step

- 24" wide expanded metal steps
- 20" deep top stem
- 42" guardrails • (2) 6V deep cycle batteries
- 10 amp battery charger
- dayton 12V DC winch
- 350# ladder capacity
- 300# table lifting capacity
- 20"Dx30"W lift table
- gray powder coat finish

The Cotterman Lift Table Ladder provides powered retrieval and/or stocking at fixed shelving heights. Commonly used in Home Center stores for retrieving paint cans, the primary purpose is to handle dense items that are more efficiently lifted rather than carried. The unit is powered by two 6V DC Trojan batteries with a Guest 10 AMP battery charger. Sizes offered are 5 step through 8 step. Ships setup with protective crating from Michigan plant only.

SPECIFICATIONS:

MODEL	BASE W	BASE L	TOP STEP H	TABLE WORK H
5LTL	34"	66"	50"	92"
6LTL	34"	72"	60"	102"
7LTL	34"	78"	70"	112"
8LTL	34"	84"	80"	122"



The Maxi-Lift®

OUR FAMILY OF ELEVATING WORK PLATFORMS

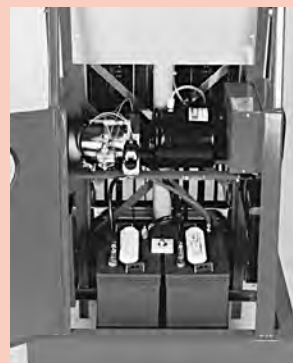
MODEL MLN-176BH ELECTRO/HYDRAULIC GROUND ENTRY OUTRIGGERLESS WORK PLATFORM

Cotterman's electro/hydraulic elevating work platform offers convenient ground entry and elevation to a maximum platform height of 17 ft. giving a working height of 23 ft.

The Maxi-Lifts® smooth electro/hydraulic system is powered by a 12V DC motor. The heavy duty steel construction and dual leaf chains provide a comfortable, stable ascent to the desired work level. A built-in battery charger is provided with two (2) heavy duty 6V deep cycle batteries. All units are supplied with 110V AC power outlet on the platform. A lockable control center is provided to prevent unauthorized use.

stability
without
outriggers

Easy access to the 24"x30" platform at ground level from left or right side. Compact design allows easy movement through standard doorways.



The Maxi-Lift's® smooth electro/hydraulic system is powered by 2 batteries.



Control center in base includes a master key lock. An emergency stop button. Platform motion controls and 120VAC input for platform outlet.



MODEL ML-256BH ELECTRO/HYDRAULIC GROUND ENTRY WORK PLATFORM

Cottman's electro/hydraulic elevating work platform offers convenient ground entry and elevation to a maximum platform height of 25 ft. giving a working height of 31 ft.

The Maxi-Lifts® smooth electro/hydraulic system is powered by a 12V DC motor. The heavy duty steel construction and dual leaf chains provide a comfortable, stable ascent to the desired work level. A built-in battery charger is provided with two (2) heavy duty 6V deep cycle batteries. All units are supplied with 110V AC power outlet on the platform. A lockable control center is provided to prevent unauthorized use.



MODEL ML-15W MANUAL WINCH ELEVATING WORK PLATFORM

The manual winch system is operated from ground level and elevates the platform to the desired working height. With the outriggers set, the operator climbs the access ladder to the platform. The cable lift system includes an emergency stop fall arrest device. Heavy duty and rigid in construction, it meets the strength and dimensional requirements of ANSI standard A92.3-1990.

Designed to be handled and operated by one worker, it rolls easily from job to job and fits through a standard doorway without alteration or disassembly.



choose the ladder....choose the color



MasterStep® • AlumaStep®

Designed to complement any business interior, MasterStep® and AlumaStep® rolling ladders are offered in 8 modern powder coated colors. These office quality ladders offer a unique blend of strength, appearance and safety for use in the office or the shop.

The one piece welded construction meets or exceeds the strength and dimensional requirements of OSHA 1910.29, ANSI A14.7 and CAL-OSHA Title 8 safety standards. Masterstep models, series ST, the load rating is 450 lbs. Alumastep models, series AM, the load rating is 350 lbs. Aluminum alloy construction is available for those applications that require cleanliness, corrosion resistance or non-magnetic use. A tapered ladder design with large caster housings provide excellent stability while in use. Our attention to quality assures you of a product that is both attractive and durable.

One through six step sizes are available with single or double top steps. Left, right or double handrail arrangements and a removable filing shelf are offered for added convenience. MasterStep® and AlumaStep® ladders are equipped with easy rolling 2" spring casters for quick start and stop mobility. Comfortable climbing steps and platform are covered with ribbed vinyl matting as standard. Optional abrasive matting can also be quoted.

8 DECORATOR COLORS TO CHOOSE FROM • BLACK • BEIGE • LIGHT GRAY • WHITE • RED • HUNTER GREEN • DARK BLUE • WALNUT				NO HANDRAILS		DOUBLE HANDRAILS		LEFT HANDRAILS		RIGHT HANDRAILS	
CHOOSE STEEL OR ALUMINUM	NO. OF STEPS INCL. TOP	TOP STEP HT.	BASE W"xL"	NO HANDRAILS		DOUBLE HANDRAILS		LEFT HANDRAILS		RIGHT HANDRAILS	
				MODEL NO.	SHPG. WT.	MODEL NO.	SHPG. WT.	MODEL NO.	SHPG. WT.	MODEL NO.	SHPG. WT.
STEEL SINGLE TOP STEP	2	18"	22x20	ST-200	28	ST-201	40	ST-202	37	ST-203	37
	3	27"	24x27	ST-300	37	ST-301	52	ST-302	48	ST-303	48
	4	36"	25x34	ST-400*	50	ST-401	66	ST-402*	62	ST-403*	62
	5	45"	26x40	ST-500	65	ST-501	83	ST-502*	79	ST-503*	79
	6	54"	27x48	-	-	ST-601**	96	-	-	-	-
STEEL DOUBLE TOP STEP	1	9"	22x19	ST-120	24	-	-	-	-	-	-
	2	18"	22x26	ST-220	31	ST-221	43	ST-222	40	ST-223	40
	3	27"	24x32	ST-320	40	ST-321	60	ST-322	55	ST-323	55
	4	36"	25x39	ST-420*	54	ST-421	70	ST-422*	66	ST-423*	66
	5	45"	26x46	ST-520*	68	ST-521	86	ST-522*	82	ST-523*	82
	6	54"	27x53	-	-	ST-621**	96	-	-	-	-
ALUMINUM SINGLE TOP STEP	2	18"	22x20	AM-200	20	AM-201	31	AM-202	27	AM-203	27
	3	27"	24x27	AM-300	26	AM-301	36	AM-302	33	AM-303	33
	4	36"	25x34	AM-400*	36	AM-401	46	AM-402*	42	AM-403*	42
	5	45"	26x40	AM-500	46	AM-501	57	AM-502*	52	AM-503*	52
	6	54"	27x48	-	-	AM-601**	61	-	-	-	-
	ALUMINUM DOUBLE TOP STEP	1	9"	22x19	AM-120	17	-	-	-	-	-
2		18"	22x26	AM-220	22	AM-221	35	AM-222	30	AM-223	30
3		27"	24x32	AM-320	28	AM-321	43	AM-322	37	AM-323	37
4		36"	25x39	AM-420*	38	AM-421	50	AM-422*	46	AM-423*	46
5		45"	26x46	AM-520*	48	AMA-521	61	AM-522*	56	AM-523*	56
6		54"	27x53	-	-	AM-621**	68	-	-	-	-

Handrails extend 30" above top step. *Must have double handrails for CAL-OSHA. **Must have 42" guardrails for CAL-OSHA. **ALL ONE AND TWO STEP LADDERS SHIP UPS.**

Cotterman®

WARRANTY

All Cotterman products are guaranteed against defects in workmanship and materials for a period of one (1) year after shipment.

DISTRIBUTED BY:

COTTERMAN COMPANY IS PROUD TO BE A MEMBER OF THE FOLLOWING ASSOCIATIONS:



National Safety Council

MEMBER **ANSI**

